

Specification	Desc./Quantity
Overspeed threshold/shift light	LED
Immobilizer	LED
Fuel reserve	LED
a-PRC	LED
General warning	LED
DRL	LED
Side stand	LED

Frame and suspensions

CHASSIS

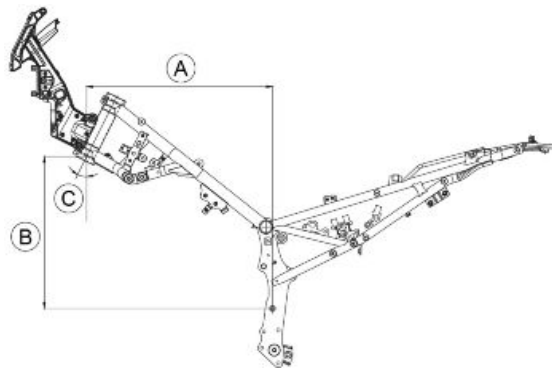
Specification	Desc./Quantity
Type	Welded tubular double cradle steel frame.
Steering rake angle	26.7° (measurements with respect to bare chassis)

SUSPENSION

Specification	Desc./Quantity
Front fork	Adjustable upside-down hydraulic fork with 43 mm (1.69 in) stanchions
Front stroke	240 mm (9.44 in)
Rear shock absorber	Progressive linkage with piggy-back. Adjustable spring preload, hydraulic compression and rebound damping.
Rear stroke	106,5 mm (4.19 in)

FRAME DIMENSIONS

Specification	Desc./Quantity
Size "A"	559.1 mm (22.01 in) (measurements refer to the bare chassis)
Size "B"	456.9 mm (17.98 in) (measurements refer to the bare chassis)
Angle "C"	26.7° +/- 0.25° (measurements refer to the "naked" frame)



Brakes

BRAKES

Specification	Desc./Quantity
Front	Discs Ø 300 mm (11.81 in), two-piston floating callipers - Ø 30-32 mm (1.18-1.25 in) and 2 pads - axial pump with integrated reservoir.
Rear	Disc brake - Ø 260 mm (10.23 in), single-piston floating calliper - Ø 34 mm (1.34 in) - pump with separate reservoir.

Wheels and tyres

WHEEL RIMS

Specification	Desc./Quantity
Front wheel	2,15 x 21" with spokes, alloy rim channel
Rear wheel	4,25 x 18" with spokes, alloy rim channel

TYRES

Specification	Desc./Quantity
Front tire	90/90 - 21 M/C 54V (permitted use category M + S) Alternative solution: 90/90 - 21 M/C 54R M+S (Vmax: 170 km/h) (105 mph)
Inflation pressure	Rider: 2 bar (200 KPa) (29 PSI) Rider + Passenger: 2.2 bar (220 KPa) (31.90 PSI) Off-road: 2 bar (200 KPa) (29 PSI)
Rear tire	150/70 R18 M/C 70V (permitted use category M + S) Alternative solution: 150/70 - 18 M/C 70R M+S (Vmax: 170 km/h) (105 mph)
Inflation pressure	Rider: 2.5 bar (250 KPa) (36.25 PSI) Rider + Passenger: 2.7 bar (270 KPa) (39.16 PSI) Off-road: 2 bar (200 KPa) (29 PSI)

WARNING



RESPECT THE INFLATION PRESSURE INDICATED IN EVERY DRIVING / ROUTE CONDITION. FAILURE TO COMPLY WITH THIS PRESCRIPTION CAN CAUSE SERIOUS DAMAGE TO THE WHEELS AND TO THE VEHICLE IN GENERAL. IN PARTICULAR, RIDING WITH INFLATION PRESSURES LOWER THAN THOSE PRESCRIBED IS HIGHLY UNRECOMMENDED.

Supply

FUEL SYSTEM

Specification	Desc./Quantity
Fuel	Unleaded gasoline E10 (95 R.O.N.)

Tightening Torques

If the following tables do not expressly indicate the tightening torque values, refer to the table with the generic torque values indicated below.

SELF-TAPPING SCREW TORQUES FOR PLASTIC

	2.9 mm	3.9 mm	4.2 mm	4.9 mm
Tightening torque:	1 Nm (0.73 lbf ft)	1.5 Nm (1.10 lb ft)	2 Nm (1.47 lb ft)	2.5 Nm (1.84 lb ft)

METRIC SCREW TIGHTENING TORQUES

	M4	M5	M6	M8	M10	M12
Tightening torque:	3 Nm (2.21 lbf ft)	5.5 Nm (4.05 lbf ft)	9.5 Nm (7.00 lbf ft)	25 Nm (18.43 lb ft)	50 Nm (36.87 lb ft)	80 Nm (59.00 lb ft)

METRIC SCREW TIGHTENING TORQUES ON FASTENERS WITH PLASTIC COMPRESSION WITHOUT INSERTED COLLAR OR BUSH

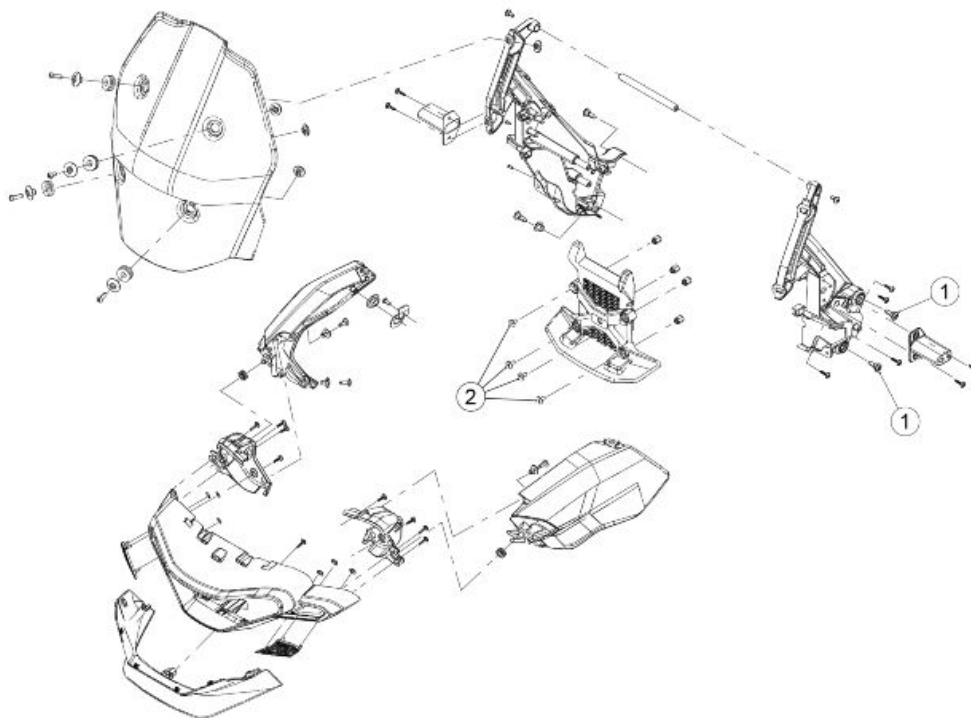
	M4	M5	M6
Tightening torque:	1.5 Nm (1.10 lbf ft)	2 Nm (1.47 lbf ft)	3 Nm (2.21 lbf ft)

CAUTION

THE SCREWS WITH THREAD-LOCK SEALANT (PRE-IMPREGNATED) MUST BE REPLACED WITH NEW SCREWS AFTER THEY HAVE BEEN LOOSENED. BEFORE FITTING THE NEW SCREWS, CLEAN THE THREADED HOLES CAREFULLY, MAKING SURE THAT ALL TRACES OF THE OLD THREAD-LOCK SEALANT HAVE BEEN ELIMINATED.

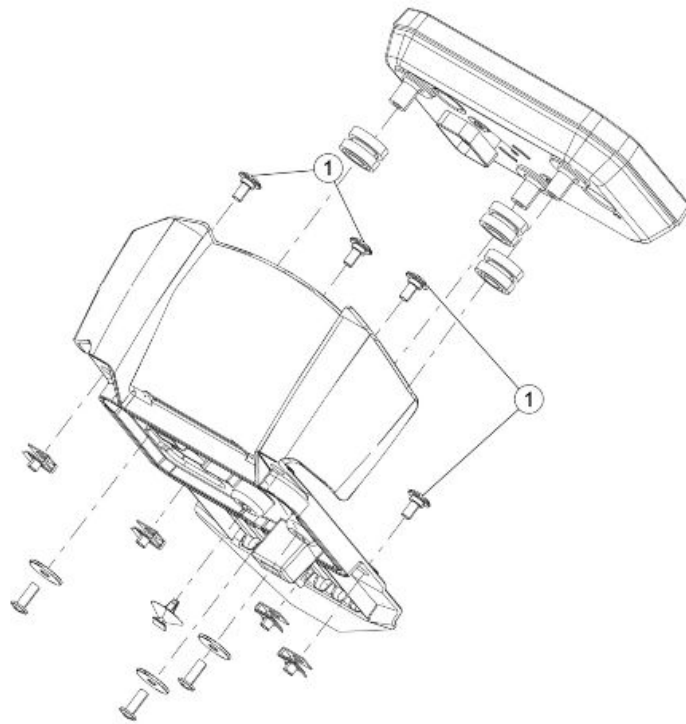
Chassis

Front side



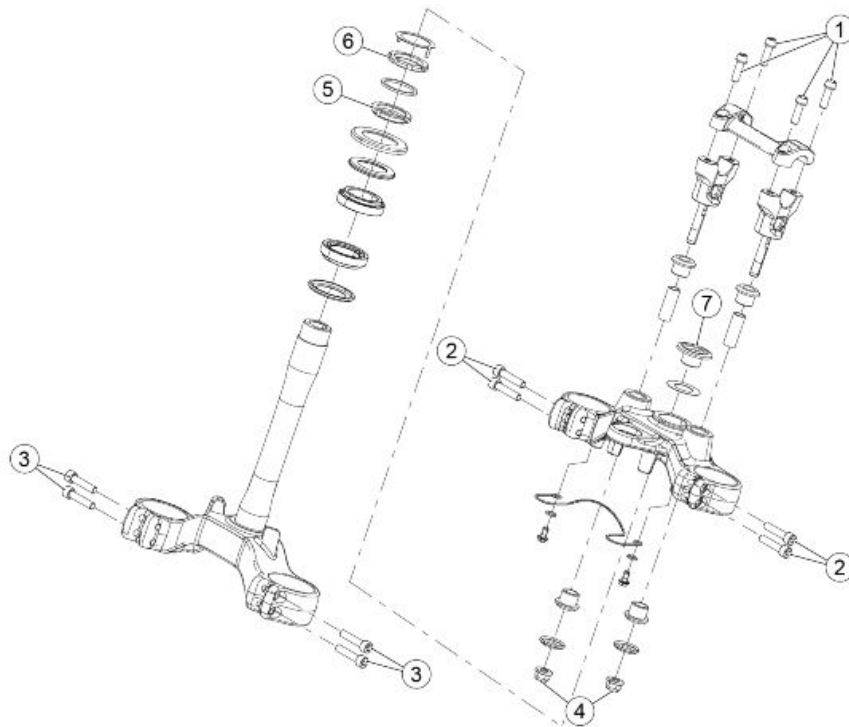
FAIRING FRONT

Pos.	Description	Type	Quantity	Torque	Notes
1	Screws fastening the front stand to the frame	M6x22	4	6.5 Nm (4.79 lbf ft)	-
2	SHC screws fastening the instrument panel front cover	M5x9	4	4 Nm (2.95 lbf ft)	-



INSTRUMENTS

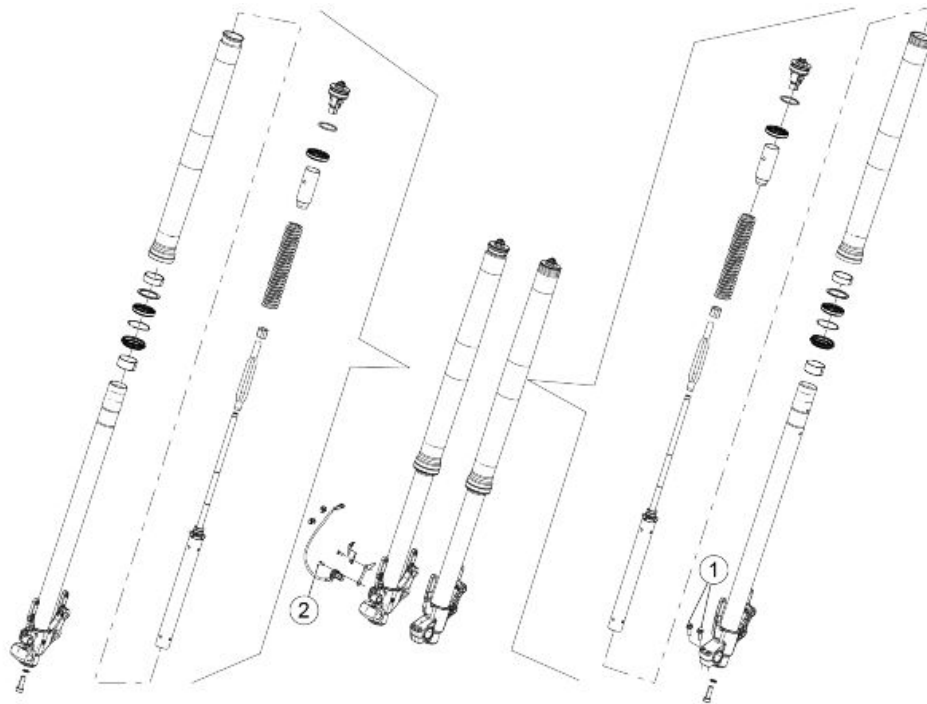
Pos.	Description	Type	Quantity	Torque	Notes
1	SHC screw fastening the instrument panel to the front support	M5x9	1	4 Nm (2.95 lbf ft)	-



STEERING

Pos.	Description	Type	Quantity	Torque	Notes
1	Flanged, hex. head screws fastening the front brake callipers	M10x35	4	50 Nm (36.87 lb ft)	-

Pos.	Description	Type	Quantity	Torque	Notes
2	SHC screws fastening the upper plate to the stanchions	M8x35	4	25 Nm (18.43 lbf ft)	-
3	SHC screws fastening the lower plate to the stanchions	M8x35	4	25 Nm (18.43 lbf ft)	-
4	Flanged, self-locking nuts fastening the raiser to the upper plate	M10	2	50 Nm (36.87 lb ft)	-
5	Steering headstock tightening ring nut	M35x1	1	60 Nm (44.25 lbf ft)	Pre-tightening
5	Steering headstock tightening ring nut	M35x1	1	40 +/- 5 Nm (29.50 +/- 3.68 lb ft)	Tightening
6	Headstock tightening counter-lock ring	-	1	Manual tightening	-
7	Steering headstock tightening central plug	-	1	100 Nm (73.75 lb ft)	-

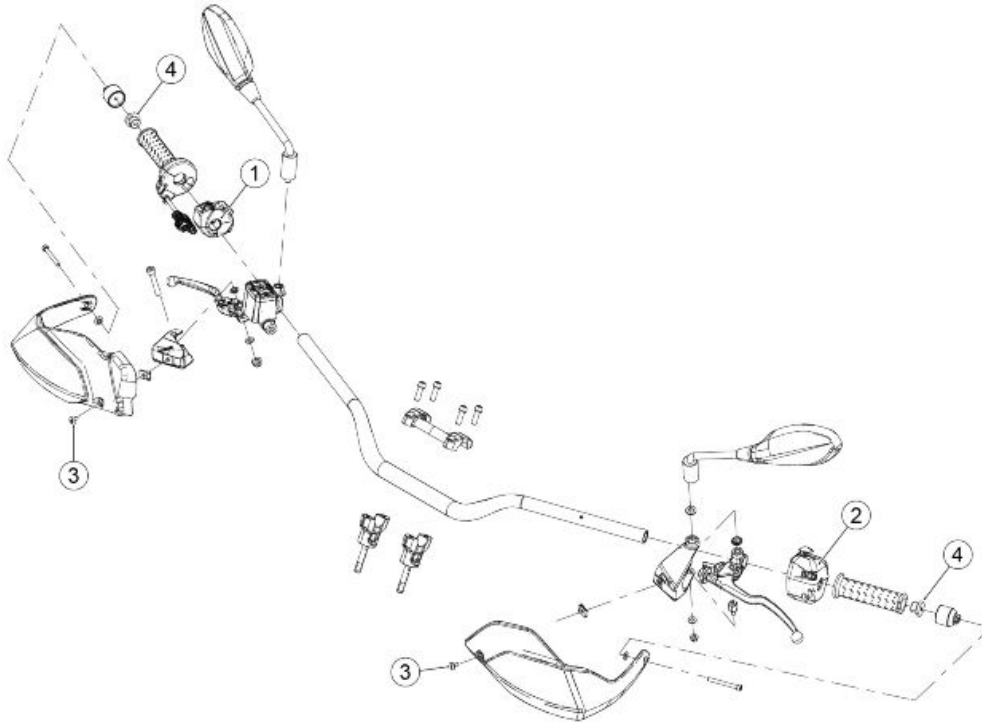


FRONT FORK

Pos.	Description	Type	Quantity	Torque	Notes
1	Screws fastening the left stanchion foot hub	M6	2	10 Nm (7.37 lbf ft)	-
2	Rear ABS sensor fastening SHC screw	M5x16	1	6 Nm (4.42 lbf ft)	-

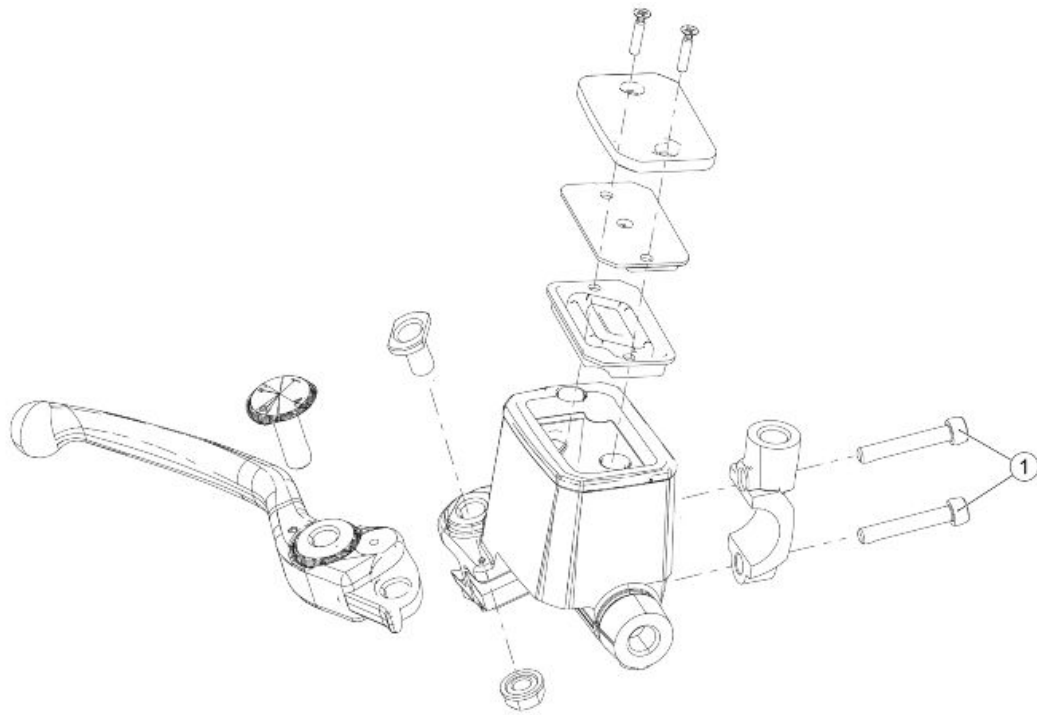
FRONT BRAKE CALLIPER

Pos.	Description	Type	Quantity	Torque	Notes
1	Flanged, hex. head screws fastening the front brake callipers	M10x35	4	50 Nm (36.87 lb ft)	-



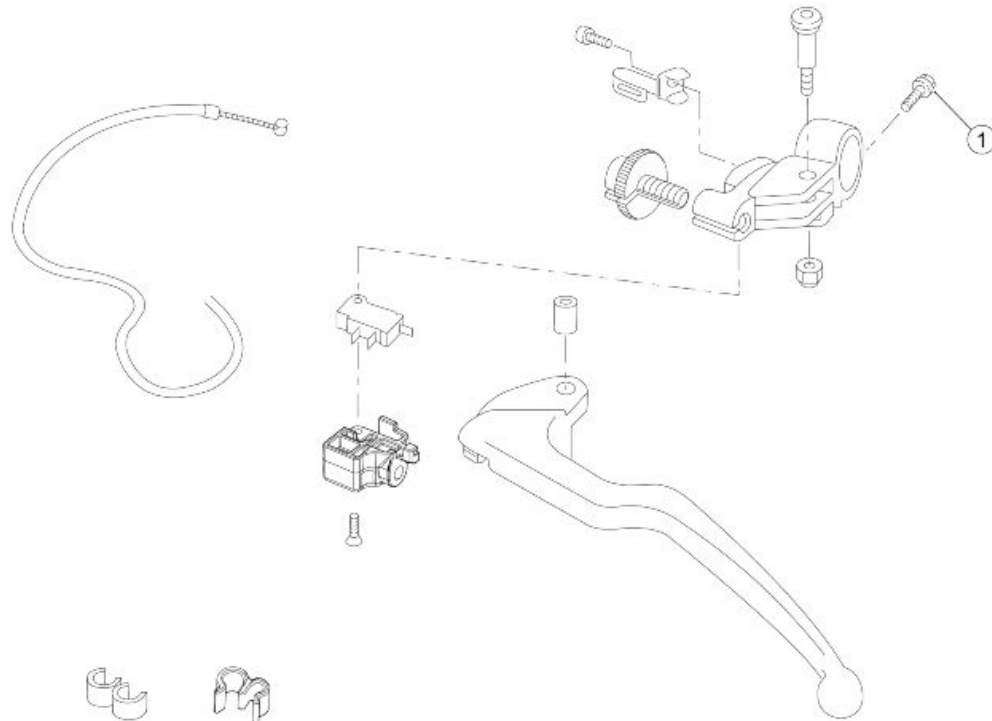
HANDLEBAR-CONTROLS

Pos.	Description	Type	Quantity	Torque	Notes
1	Right hand light switches fixing screw	M5	1	4 Nm (2.95 lbf ft)	-
2	Left hand light switches fixing screw	M5	1	4 Nm (2.95 lbf ft)	-
3	SHC screws fastening the hand guards to the adapters	M5x9	2	4 Nm (2.95 lbf ft)	-
4	Handlebar terminals	M18	2	12 Nm (8.85 lbf ft)	-



FRONT BRAKE MASTER CYLINDER

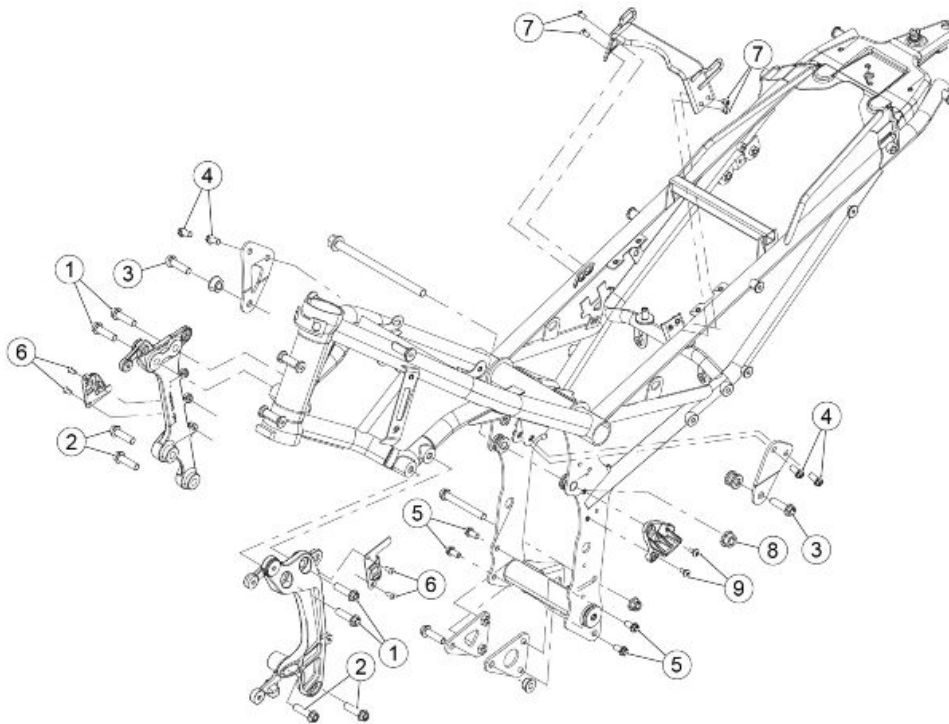
Pos.	Description	Type	Quantity	Torque	Notes
1	Front brake pump fixing screws	M6	2	10 Nm (7.37 lbf ft)	-



CLUTCH CONTROL

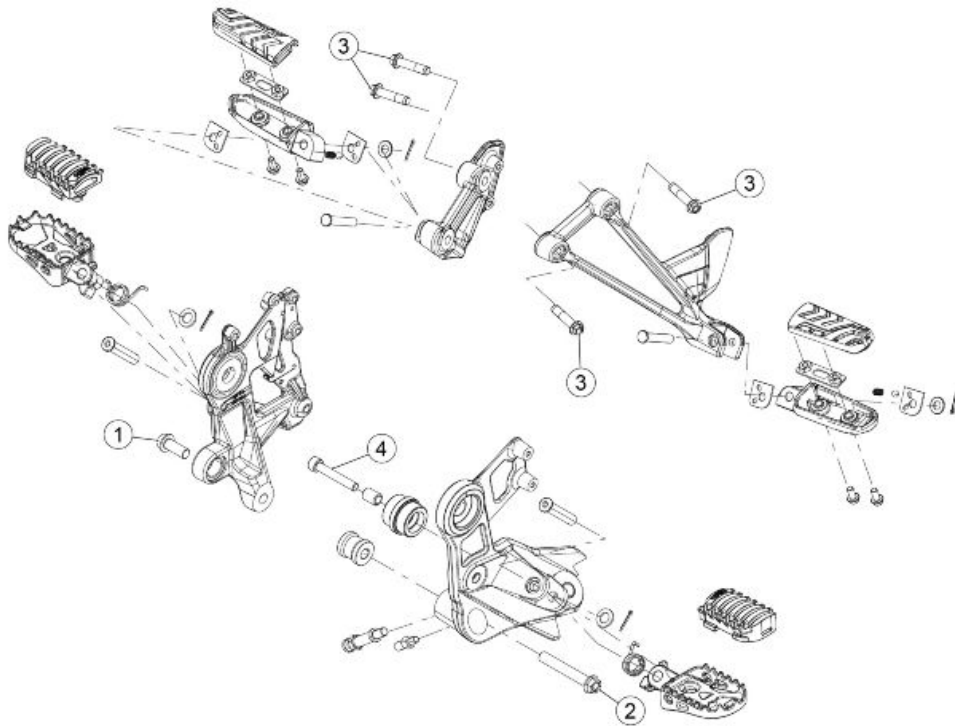
Pos.	Description	Type	Quantity	Torque	Notes
1	Clutch control fastener screw	M6	1	10 Nm (7.37 lbf ft)	-

Central part



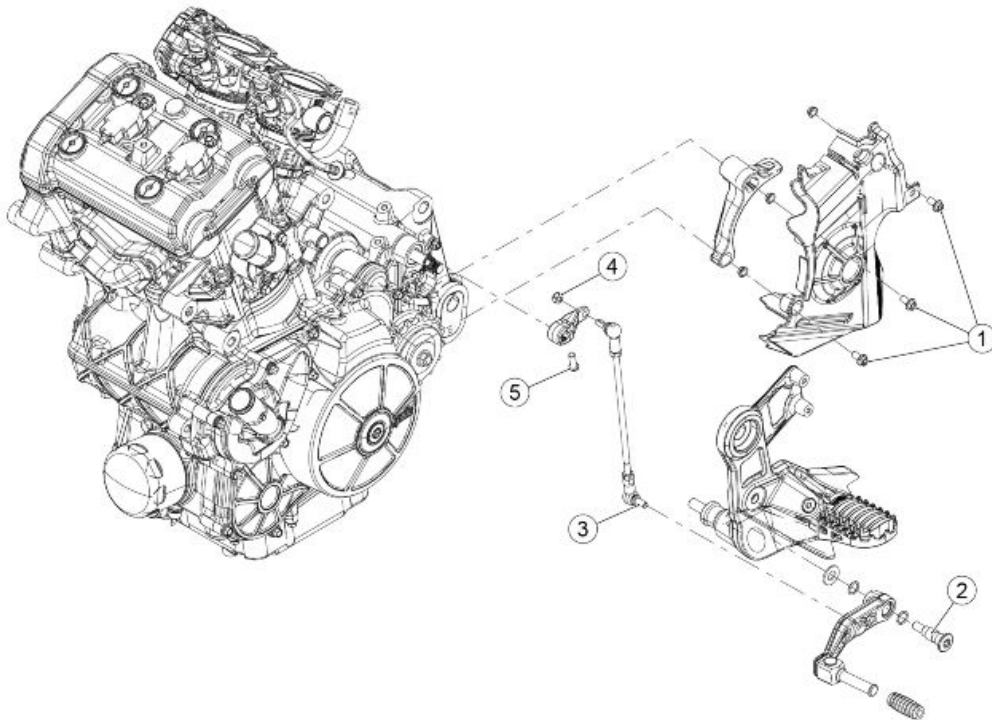
CHASSIS

Pos.	Description	Type	Quantity	Torque	Notes
1	Screws fastening the plates to the frame	M10x35	4	50 Nm (36.87 lb ft)	-
2	Screws fastening the engine to the support brackets	M10x35	4	50 Nm (36.87 lb ft)	-
3	Screws fastening the engine to the central support brackets	M10x35	2	50 Nm (36.87 lb ft)	-
4	Flanged, hex. head screws fastening the central support brackets to the frame	M8	4	25 Nm (18.43 lbf ft)	-
5	Flanged, hex. head screws fastening the lower support brackets to the frame	M8	4	25 Nm (18.43 lbf ft)	-
6	Screws fastening the connector support to the frame	M5	4	4 Nm (2.95 lbf ft)	-
7	SHC screws fastening the saddle U-bolt	M6x10	4	10 Nm (7.37 lbf ft)	-
8	Nut fixing engine pin to the frame	M12	1	50 Nm (36.87 lb ft)	-
9	Screws fastening the chain stopper	M5	2	4 Nm (2.95 lbf ft)	-



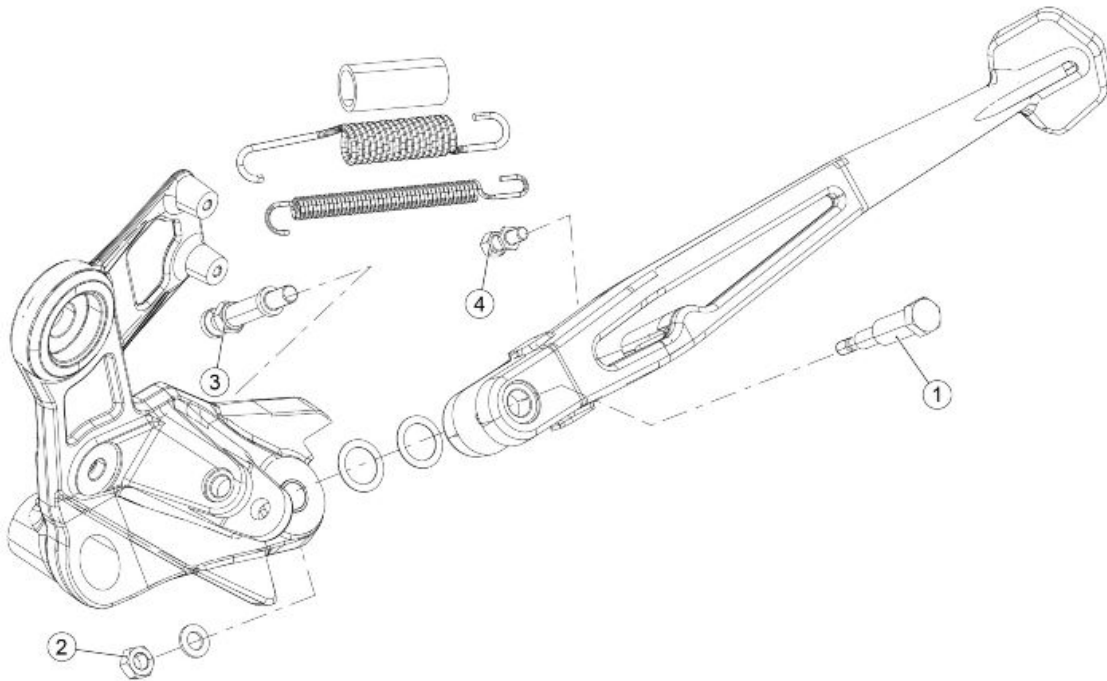
FOOTRESTS

Pos.	Description	Type	Quantity	Torque	Notes
1	Flanged, hex. head screw fastening the RH rider footrest to the frame	M10	1	50 Nm (36.87 lb ft)	-
2	to the frame	M10	1	50 Nm (36.87 lb ft)	-
3	Flanged, hex. head screw fastening the LH passenger footrest support	M8x35	4	25 Nm (18.43 lbf ft)	-
4	Chain tensioner roller fixing SHC screw	M8x50	1	25 Nm (18.43 lbf ft)	-



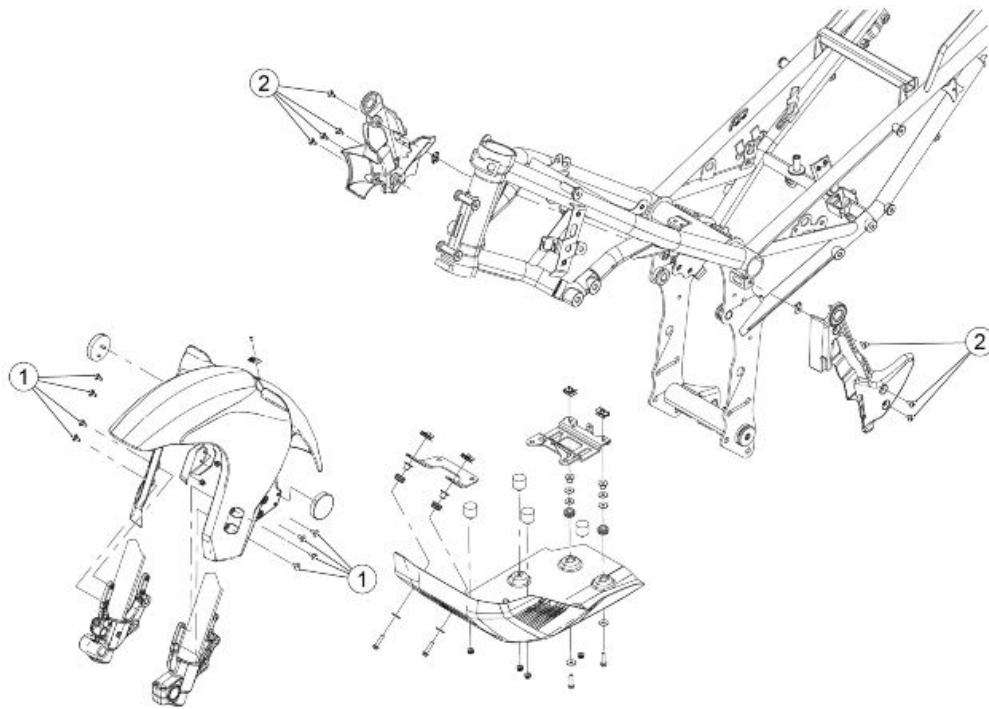
LINKAGE

Pos.	Description	Type	Quantity	Torque	Notes
1	Chain guard fixing flanged, hex. head screws	M6x12	3	4 Nm (2.95 lbf ft)	-
2	Gearbox lever fixing pin	M8	1	25 Nm (18.43 lbf ft)	Loct. 243
3	Spherical pin fixing the actuation control with the gearbox lever	M6	1	9.5 Nm (7.00 lbf ft)	-
4	Gearbox lever pin fixing nut	M6	1	9.5 Nm (7.00 lbf ft)	-
5	Preselector lever SHC fixing screw	M6x20	1	9.5 Nm (7.00 lbf ft)	-



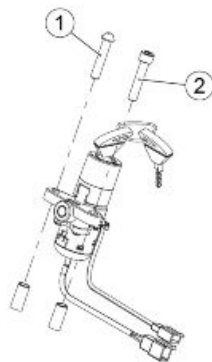
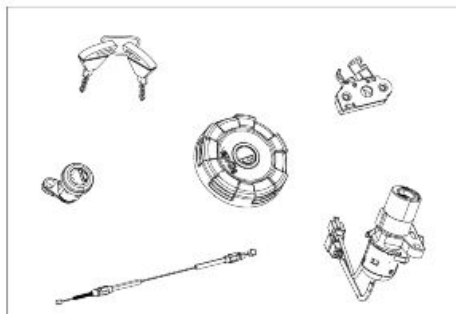
STAND

Pos.	Description	Type	Quantity	Torque	Notes
1	Pin fixing the lateral stand to the LH rider footboard support	M8x1.25	1	13 Nm (9.58 lbf ft)	-
2	Side stand pin fixing nut	M8x1.25	1	25 Nm (18.43 lbf ft)	Loct. 243
3	Pin spring coupling on the plate	M6	1	22 Nm (16.22 lb ft)	Loct. 243
4	Pin spring coupling on the stand	M6	1	10 Nm (7.37 lbf ft)	Loct. 243
-	Threaded rod	M6	1	8 Nm (5.90 lbf ft)	Loct. 243
-	Stand sensor fixing nut	M6	1	10 Nm (7.37 lbf ft)	-



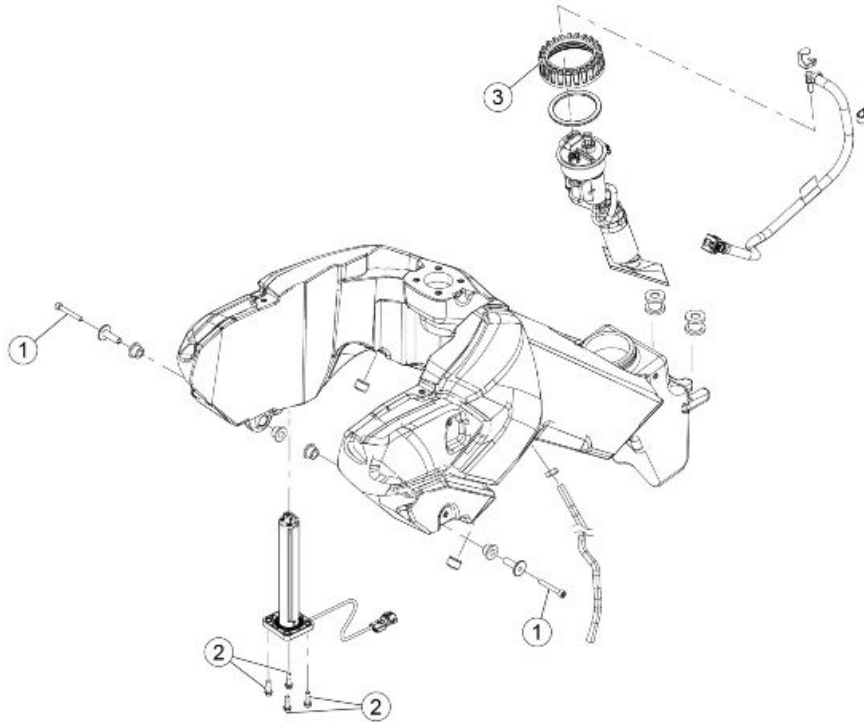
FRONT MUDGUARD - ENGINE FAIRING

Pos.	Description	Type	Quantity	Torque	Notes
1	Front mudguard SHC fixing screws	M5x9	8	4 Nm (2.95 lbf ft)	-
2	SHC screws fastening the frame central covers	M5x9	8	4 Nm (2.95 lbf ft)	-



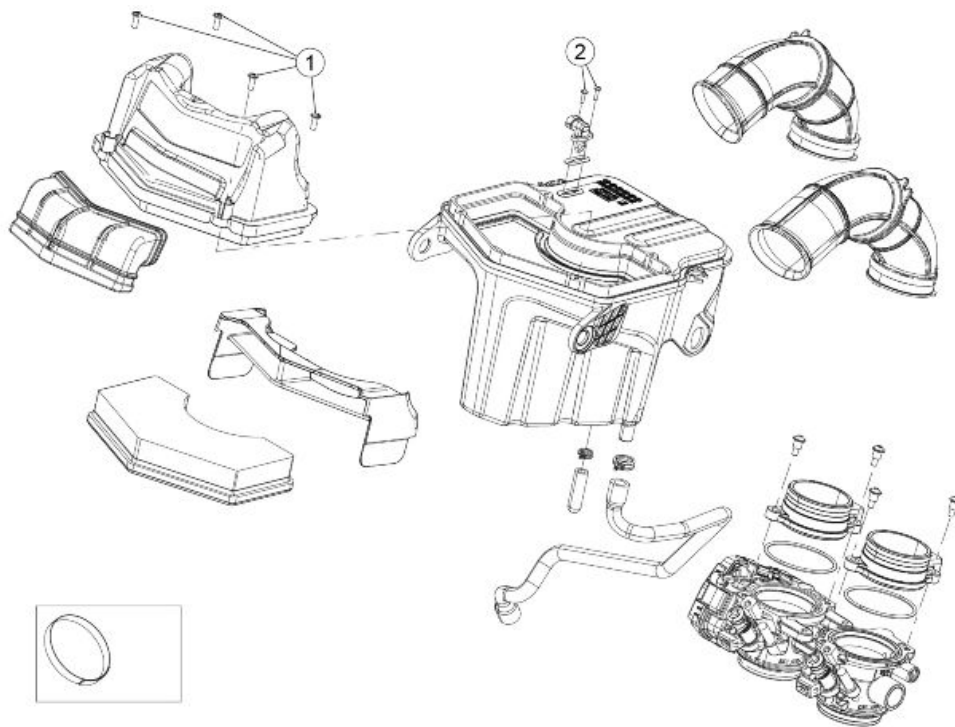
LOCKS

Pos.	Description	Type	Quantity	Torque	Notes
1	Ignition switch assembly fastening shear head screw	M8x20	1	Bring to break	-
2	Pre-impregnated SHC screw fastening the ignition switch assembly	M8x20	1	20 Nm (14.75 lbf ft)	-
3	SHC screw fastening the fuel cap flange	M5x12	1	4 Nm (2.95 lbf ft)	-



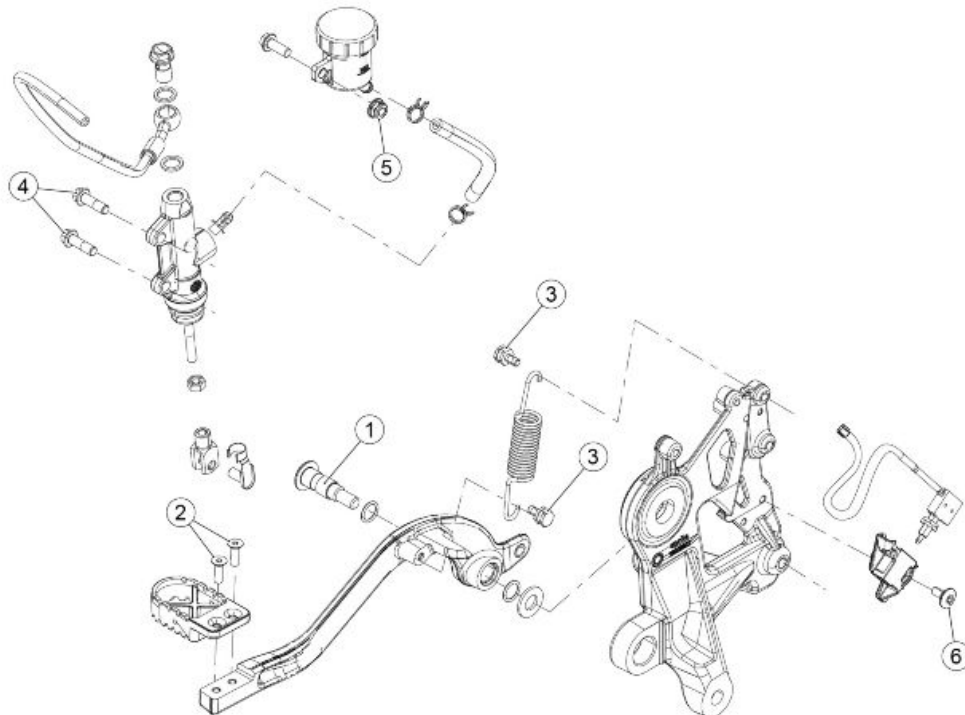
FUEL TANK

Pos.	Description	Type	Quantity	Torque	Notes
1	SHC screw laterally fixing the tank to the lateral of the frame	M6x45	2	9.5 Nm (7.00 lbf ft)	-
2	SHC screw fixing the fuel level probe	M6x20	4	2.3 Nm (1.69 lbf ft)	-
3	Fuel pump fastener ring nut	-	1	20 Nm (14.75 lbf ft)	-



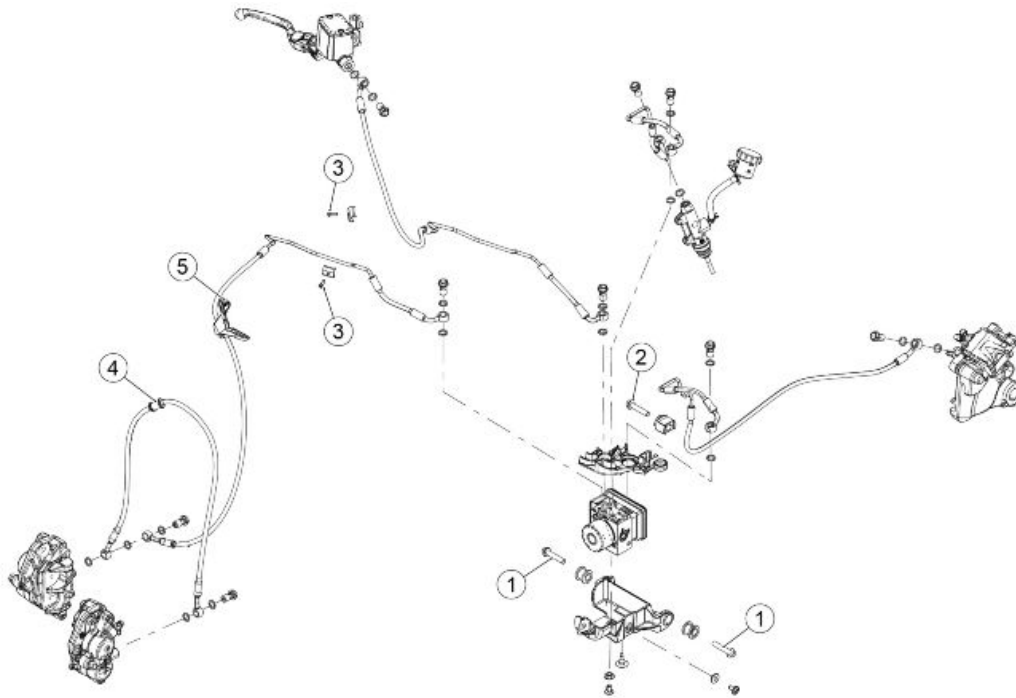
FILTER HOUSING

Pos.	Description	Type	Quantity	Torque	Notes
1	Cover self-tapping fastening screws	M5x14	4	1-1.2 Nm (0.73-0.88 lb ft)	-
2	Self-tapping screws for fastening the temperature sensor	2.9x12	2	0.5-0.8 Nm (0.36-0.59 lb ft)	-
-	Screws fastening the filter housing to the frame	M6	3	9.5 Nm (7.00 lbf ft)	-



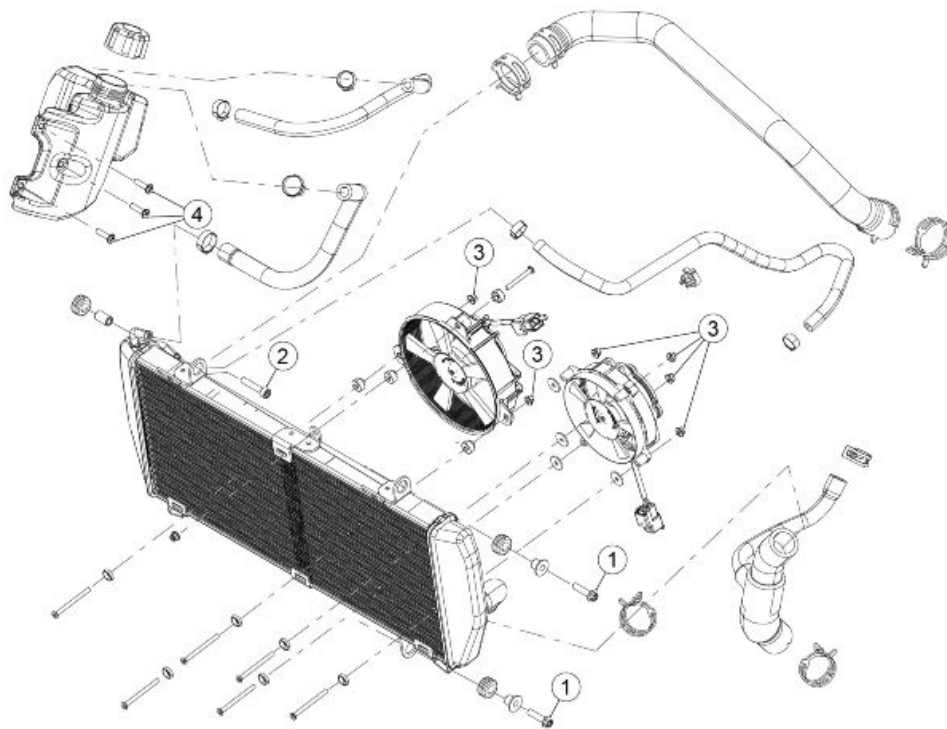
REAR BRAKE MASTER CYLINDER

Pos.	Description	Type	Quantity	Torque	Notes
1	Rear brake lever pin	M8	1	25 Nm (18.43 lbf ft)	Loct. 243
2	Pedal fixing SHC screws	M5x16	2	5.5 Nm (4.05 lbf ft)	-
3	Spring coupling pins	M5x9	2	5.5 Nm (4.05 lbf ft)	-
4	Pre-impregnated hex. head screws fastening the brake pump	M6x20	2	8 Nm (5.90 lbf ft)	-
5	Flanged self-tapping nut	M6	1	3 Nm (2.21 lbf ft)	-
6	Rear brake sensor fastening SHC screw	M5x9	1	5.5 Nm (4.05 lbf ft)	-



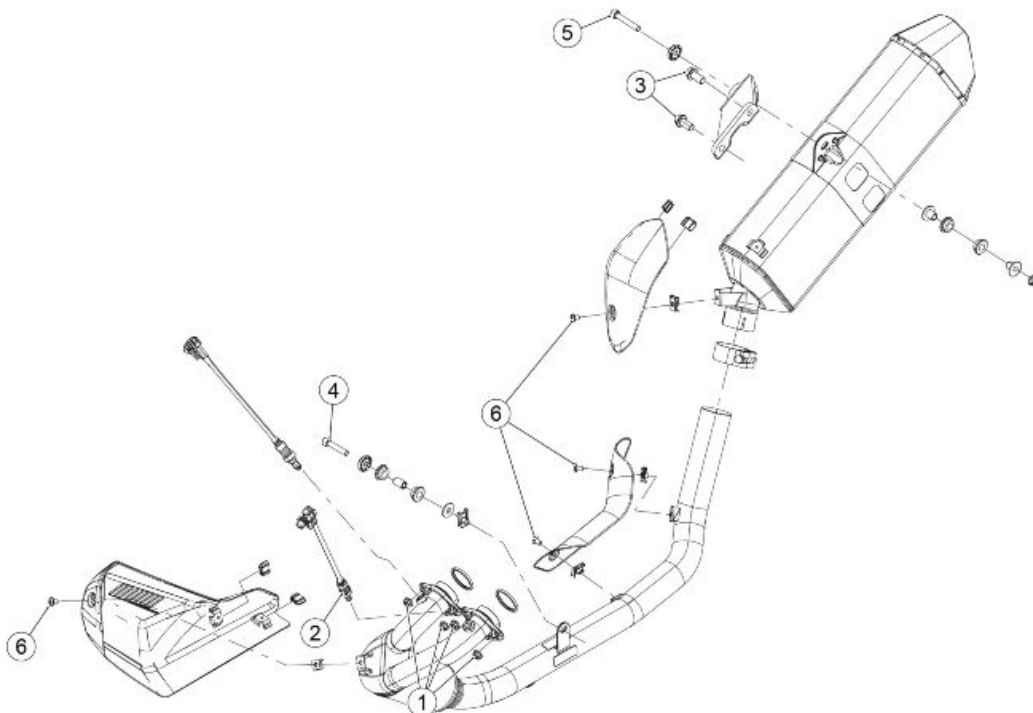
ABS BRAKING SYSTEM

Pos.	Description	Type	Quantity	Torque	Notes
1	Screws fastening the ABS modulator support to the frame	M6	2	10 Nm (7.37 lbf ft)	-
2	Flanged, hex. head screw fastening the rear pipes to the frame	M6x30	1	10 Nm (7.37 lbf ft)	-
3	Flanged, hex. head screw fastening the rear pipes to the frame	M4x14	2	2.5 Nm (1.84 lbf ft)	-
4	Screw fixing the pipes to the front mudguard	M6	1	10 Nm (7.37 lbf ft)	-
5	Screw fastening the front brake pipe conduit to the frame	M5	2	5.5 Nm (4.05 lbf ft)	-



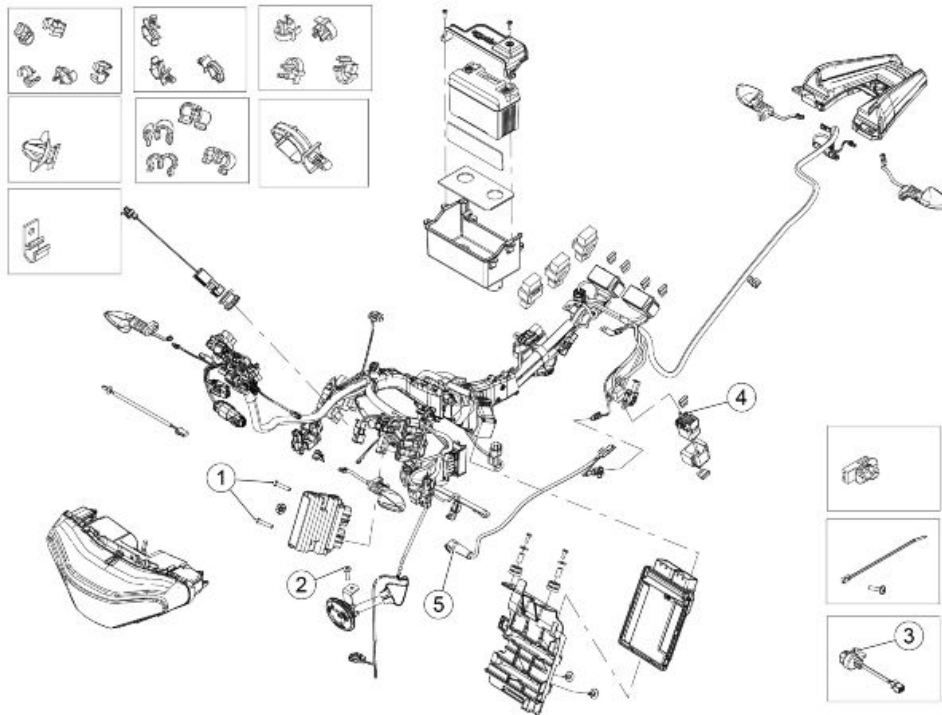
COOLING SYSTEM

Pos.	Description	Type	Quantity	Torque	Notes
1	Flanged, hex. head screws used for fastening the left side radiator	M6x25	2	6 Nm (4.42 lbf ft)	-
2	SHC screws fastening the right side radiator	M6x30	1	6 Nm (4.42 lbf ft)	-
3	Electric fan fastening flanged self-locking nut	M4	7	0.5 Nm (0.36 lbf ft)	-
4	SWP flanged screws for fixing the expansion tank	M5x20	3	2.5 Nm (1.84 lbf ft)	-



SILENCER

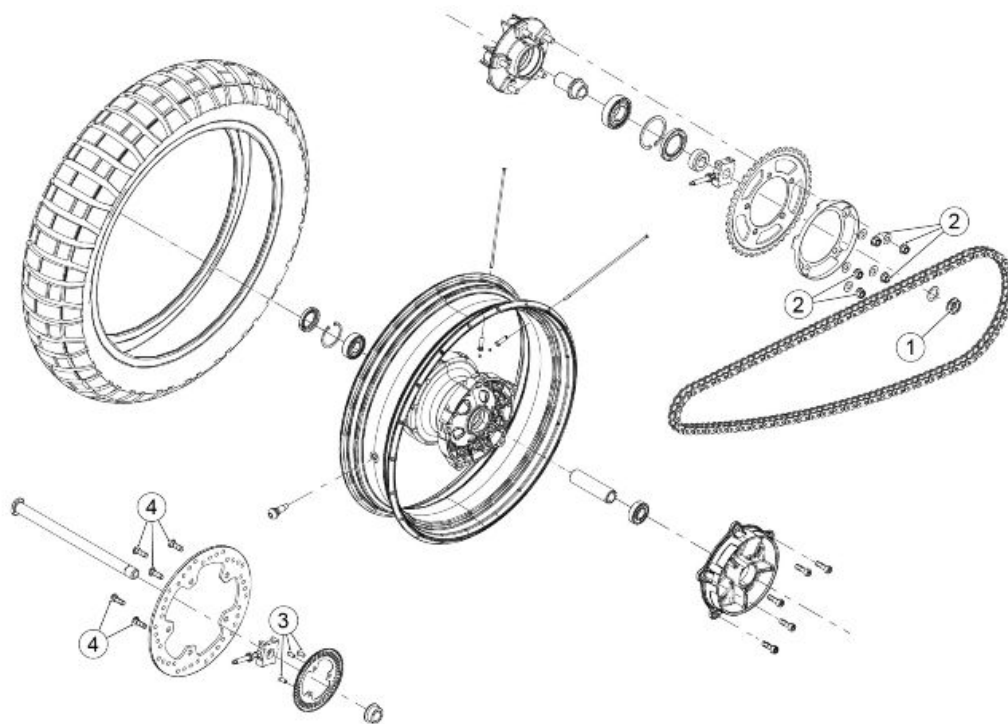
Pos.	Description	Type	Quantity	Torque	Notes
1	Exhaust manifold flange fastening nuts	M7	4	13 Nm (9.58 lbf ft)	-
2	Lambda probe	M12.1.25	1	25 Nm (18.43 lbf ft)	-
3	Flanged, hex. head screw fastening the terminal bracket to the frame	M8	2	25 Nm (18.43 lbf ft)	-
4	SHC screw fastening the exhaust to the frame	M8x40	1	25 Nm (18.43 lbf ft)	-
5	SHC screw fastening the exhaust to the frame	M8x50	1	25 Nm (18.43 lbf ft)	-
6	Torx round headed screws fastening the exhaust guards	M6x10	4	4 Nm (2.95 lbf ft)	-



ELECTRICAL SYSTEM

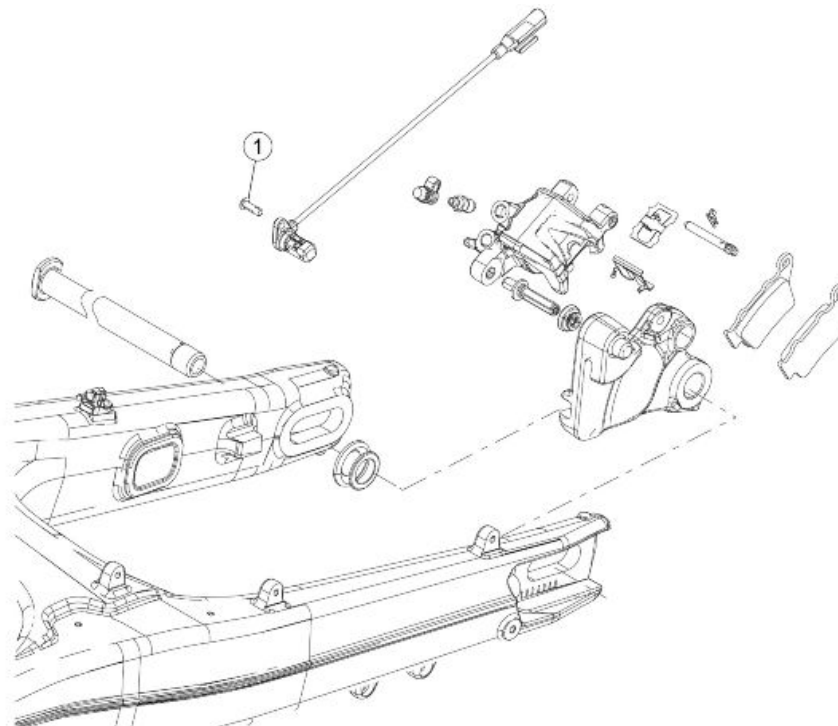
Pos.	Description	Type	Quantity	Torque	Notes
1	Flanged, hex. head screws used for fastening the left side radiator	M6x25	2	6 Nm (4.42 lbf ft)	-
2	SHC screws fastening the right side radiator	M6x30	1	6 Nm (4.42 lbf ft)	-
3	Electric fan fastening flanged self-locking nut	M4	7	0.5 Nm (0.36 lbf ft)	-
4	SWP flanged screws for fixing the expansion tank	M5x20	3	2.5 Nm (1.84 lbf ft)	-
5	Nut used for fastening the cable to the starter motor	M6	1	6 Nm (4.42 lbf ft)	-
-	Screw fastening the ground cable to the engine	M6	1	10 Nm (7.37 lbf ft)	-

Back side



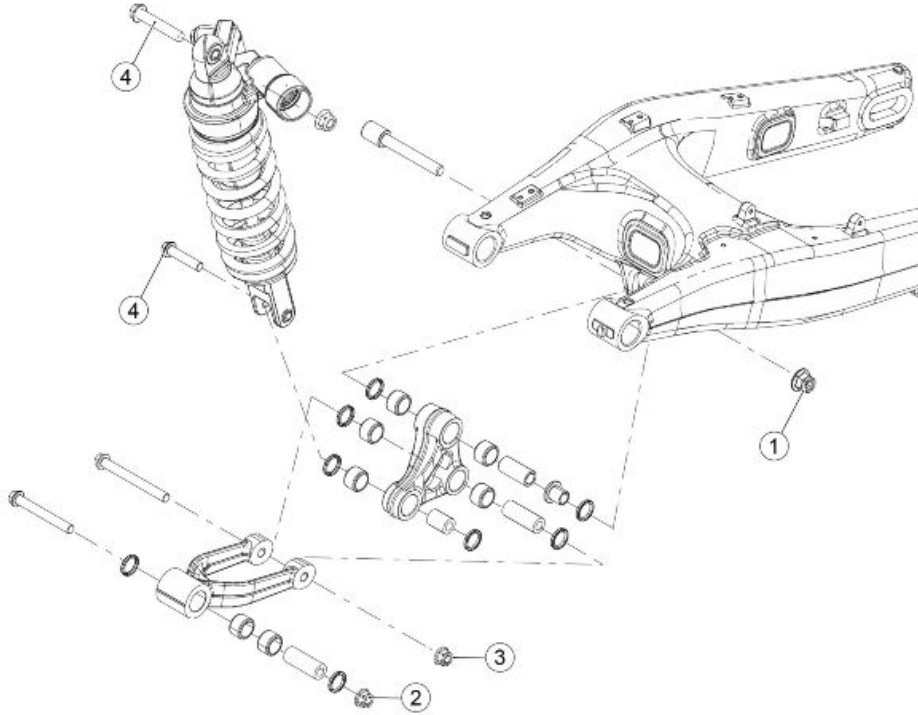
REAR WHEEL

Pos.	Description	Type	Quantity	Torque	Notes
1	Rear wheel axle nut	M20x1.5	1	120 Nm (88.50 lbf ft)	-
2	DAX sprocket fixing nuts	M10x1.25	5	50 Nm (36.87 lb ft)	-
3	Tone wheel SHC fixing screw	M6x12	3	8-10 Nm (5.90-7.37 lb ft)	-
4	Brake disc fastening screws	M8	5	28-30 Nm (20.65-22.12 lbf ft)	-



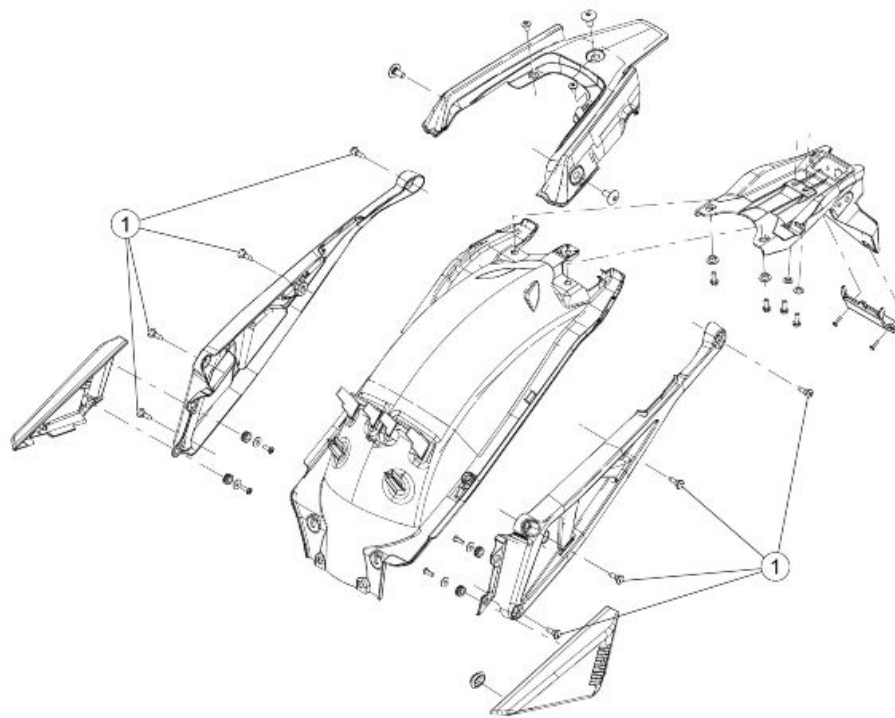
REAR BRAKE CALLIPER

Pos.	Description	Type	Quantity	Torque	Notes
1	Rear ABS sensor fastening TBEI screw	M5x16	1	6 Nm (4.42 lbf ft)	-



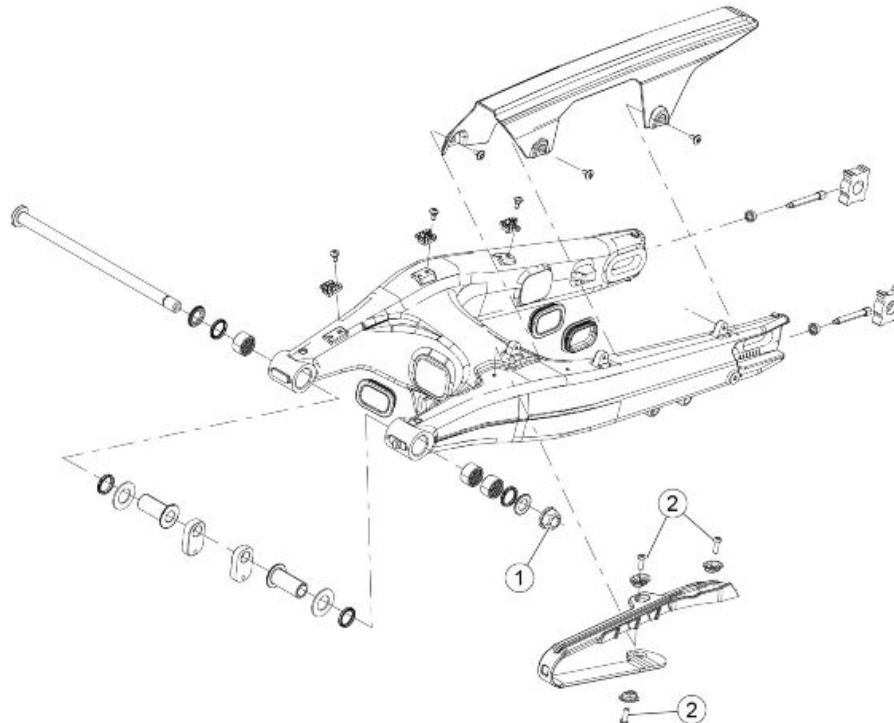
SHOCK ABSORBER

Pos.	Description	Type	Quantity	Torque	Notes
1	Double connecting rod to swingarm fixing self-locking nut	M12	1	50 Nm (36.87 lb ft)	-
2	Flanged self-locking nut fastening the single connecting rod to the chassis	M10	1	50 Nm (36.87 lb ft)	-
3	Flanged self-locking nut fastening the single connecting rod to the double connecting rod	M10	1	50 Nm (36.87 lb ft)	-
4	Shock absorber mounting	-	2	50 Nm (36.87 lb ft)	-



REAR BODYWORK

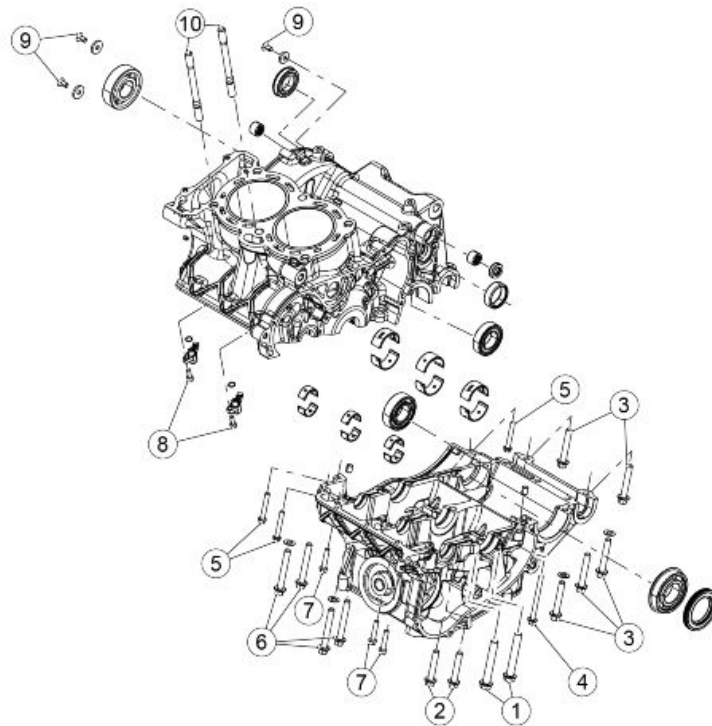
Pos.	Description	Type	Quantity	Torque	Notes
1	Tail fairing fixing screws	M6x22	8	4 Nm (2.95 lbf ft)	-



SWINGARM

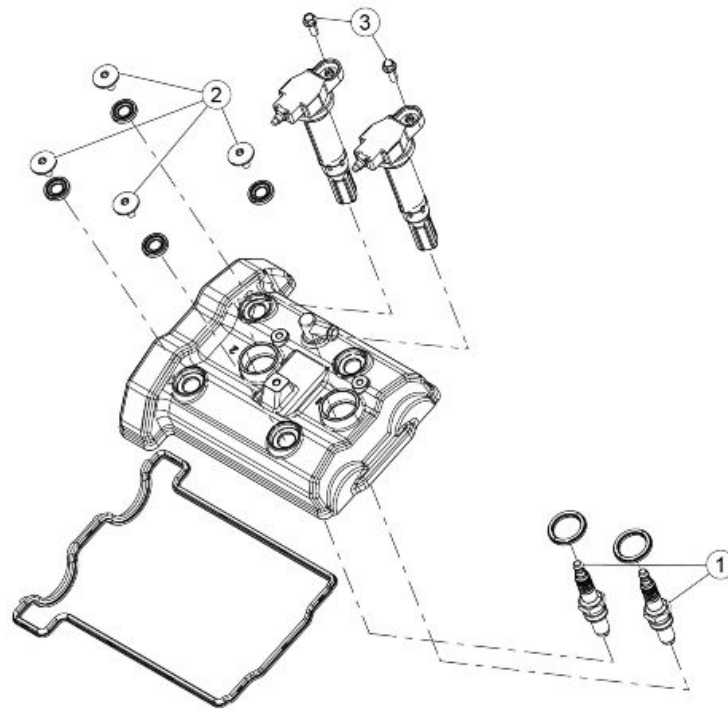
Pos.	Description	Type	Quantity	Torque	Notes
1	Swingarm pivot flanged fixing nut	M16X1.25	1	110 Nm (4.33 lbf ft)	-
2	Chain feeder shoe Torx round headed screws	M5	3	4 Nm (2.95 lbf ft)	-

Engine



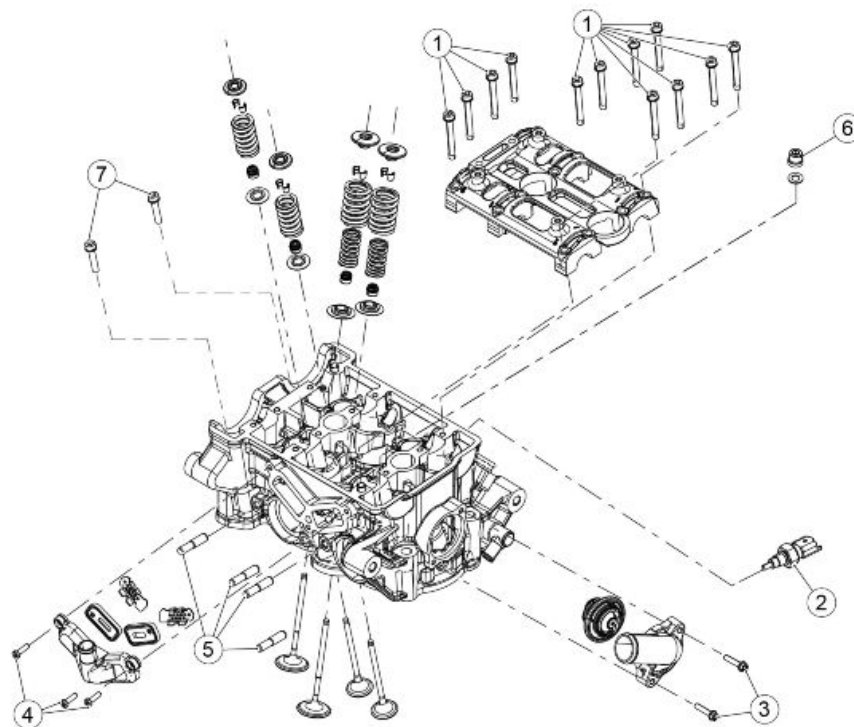
CRANKCASE

Pos.	Description	Type	Quantity	Torque	Notes
1	Crankcase halves mating screws	M10x65	6	1) 15 Nm (11,06 lbf ft) - 2) 20 Nm+30° (14,75 lbf ft+30°) - 3) 30° (resulting torque approx 65 Nm (47,94 lbf ft)	Lubricate with oil
2	Crankcase halves mating threaded hex screws	M8x45	2	22,5-27,5 Nm (16,60-20,28 lb ft)	Lubricate with oil
3	Crankcase halves mating screws	M8x50	9	22,5-27,5 Nm (16,60-20,28 lb ft)	Lubricate with oil
4	Crankcase halves mating screws	M6x70	1	10,8-13,2 Nm (7,97-9,74 lb ft)	-
5	Crankcase halves mating flanged hex screws	M6x40	3	10,8-13,2 Nm (7,97-9,74 lb ft)	-
6	Crankcase halves mating flanged hex screws	M8x60	4	22,5-27,5 Nm (16,60-20,28 lb ft)	Lubricate with oil
7	Crankcase halves mating threaded hex screws	M6x30	4	10,8-13,2 Nm (7,97-9,74 lb ft)	-
8	Pistons lubrication jets SHC fixing screw	M5x14	2	5,4-6,6 Nm (3,98-4.87 lb ft)	-
9	Bearings stopper countersunk hex head screws	-	3	9-11 Nm (6,64-8.11 lb ft)	Pre-impregnated
10	Stud bolts	M10	6	18-22 Nm (13.28-16.23 lbf ft) - H 63,5 +/-0,5 mm (2.50 +/- 0.02 in)	Pre-impregnated



HEAD COVER

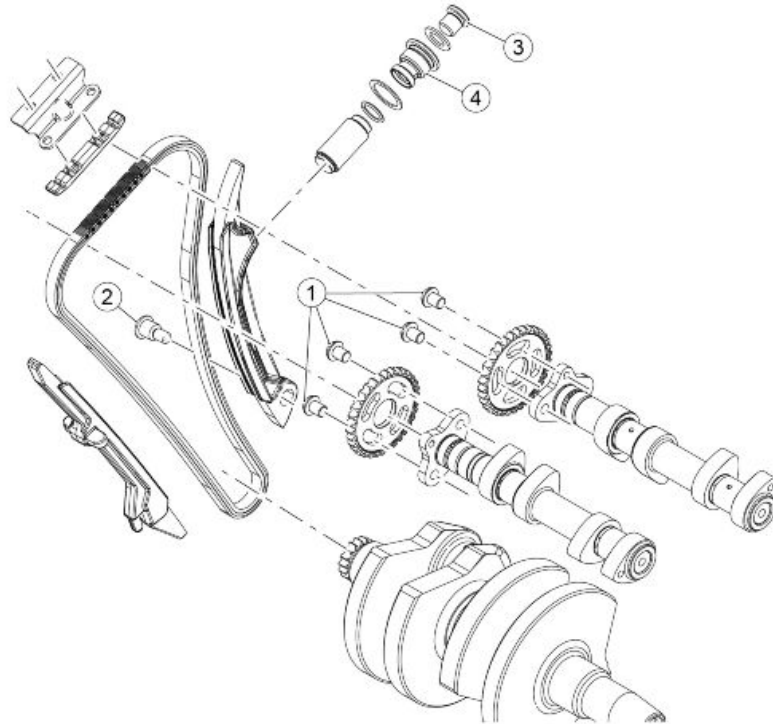
Pos.	Description	Type	Quantity	Torque	Notes
1	Spark plugs	-	2	12 Nm (8.85 lbf ft)	-
2	Head cover fastening screws	-	4	10 Nm (7.38 lbf ft)	-
3	TE flanged coil fixing screw	M6x16	2	12 Nm (8.85 lbf ft)	-



HEAD - VALVES

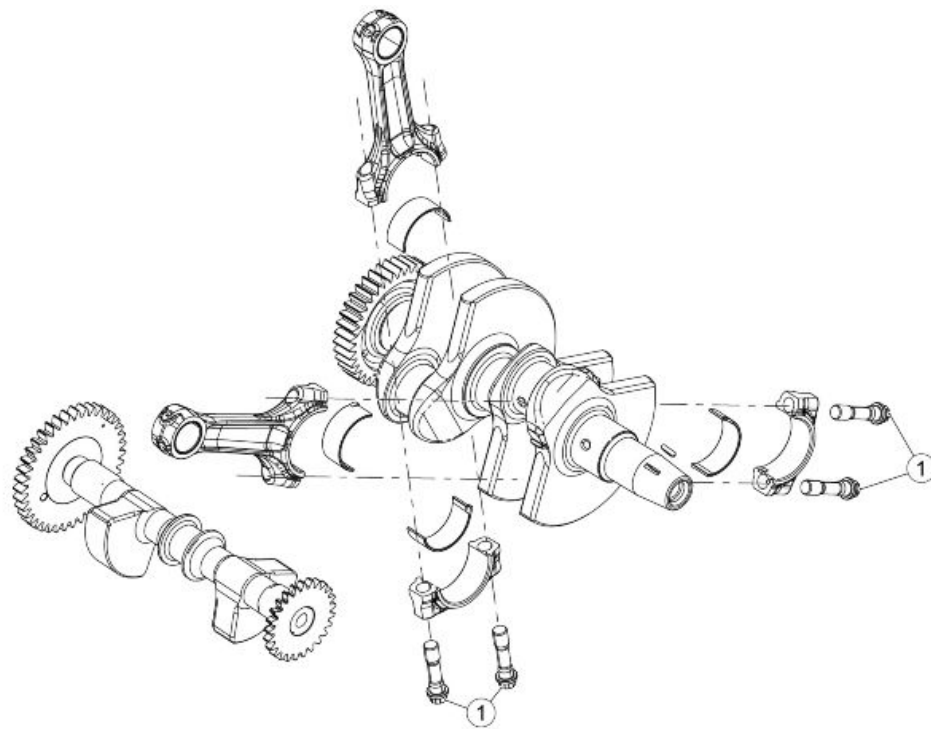
Pos.	Description	Type	Quantity	Torque	Notes
1	Cam tower fixing screws	-	12	11 Nm (8.11 lbf ft)	-

Pos.	Description	Type	Quantity	Torque	Notes
2	Water temperature sensor	-	1	20 Nm (14.75 lbf ft)	-
3	Thermostat cover flanged hex fixing screw	M5	5	6 Nm (4.43 lbf ft)	-
4	Secondary air cover fixing screws	M5x16	3	6 Nm (4.43 lbf ft)	-
5	Stud bolts	M10	4	10 Nm (7.38 lbf ft)	-
6	Flanged nut fixing cylinder head	M10	6	30 Nm (22.12 lb ft)	Pre-tightening - lubricate with MOLY-KOTE G-RAPID PLUS
6	Flanged nut fixing cylinder head	M10	6	180°	Tightening
7	Head fixing screw	M6x35	2	12 Nm (8.85 lbf ft)	-



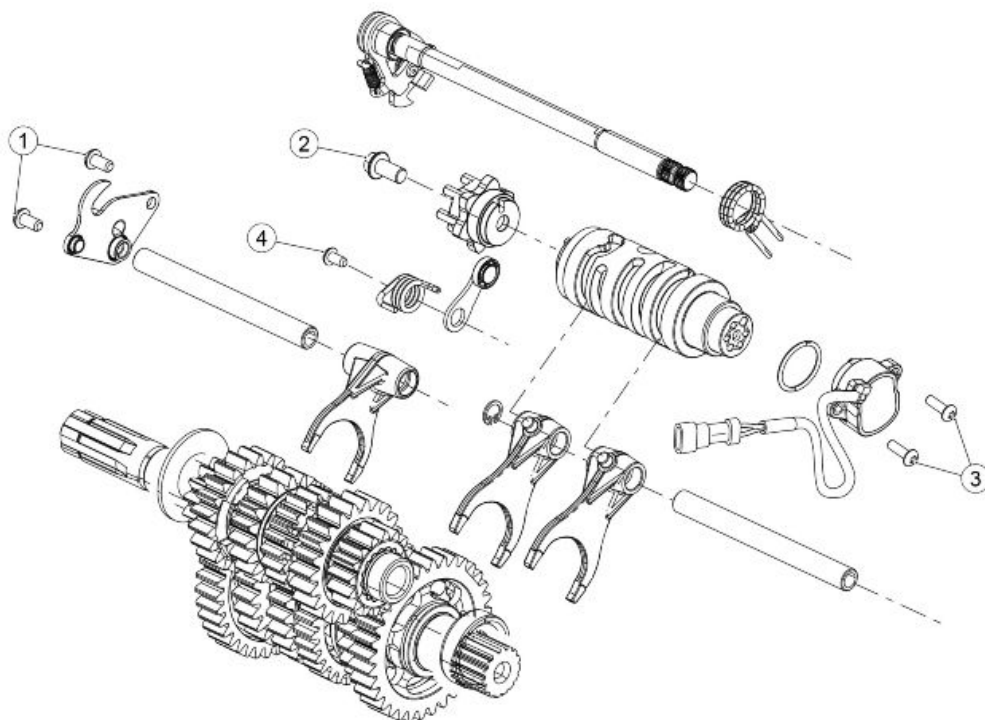
TIMING SYSTEM

Pos.	Description	Type	Quantity	Torque	Notes
1	Timing gears Torx button head fixing screws	-	4	30 Nm (22,13 lbf ft)	-
2	Chain tensioner slider support screw	M8	1	18.5 Nm (13.64 lbf ft)	Pre-permeated
3	Cap	-	1	20 Nm (14.75 lbf ft)	-
4	Special screw	-	1	25 Nm (18.43 lbf ft)	-



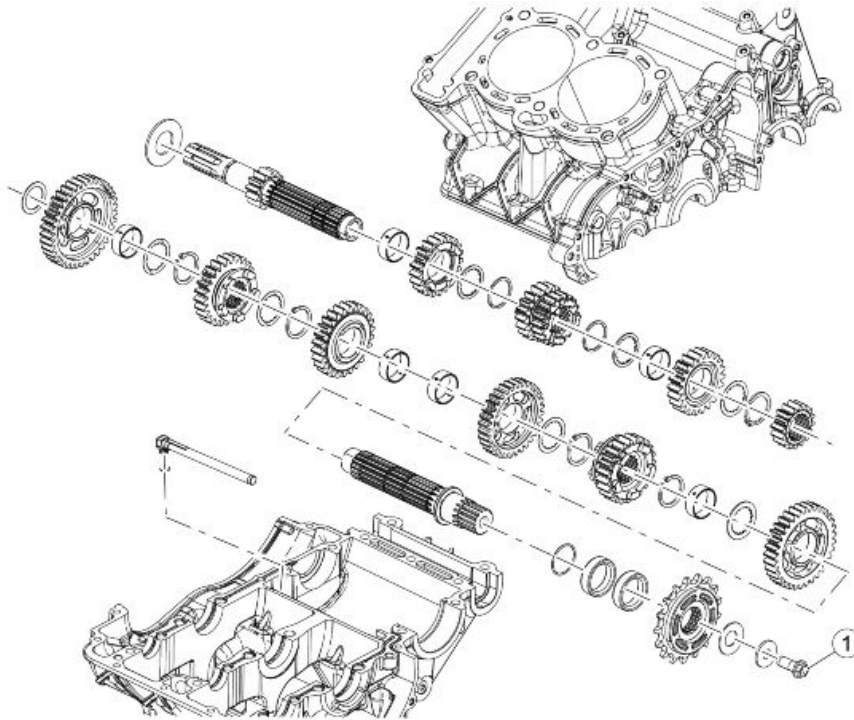
CRANKSHAFT

Pos.	Description	Type	Quantity	Torque	Notes
1	Connecting rod screws	M	4	1) 15 Nm (11,06 lbf ft) - 2) 20 Nm+110° (14,75 lbf ft+110°)	Lubricate with CAS-TROL MOLUB ALLOY PASTE PL



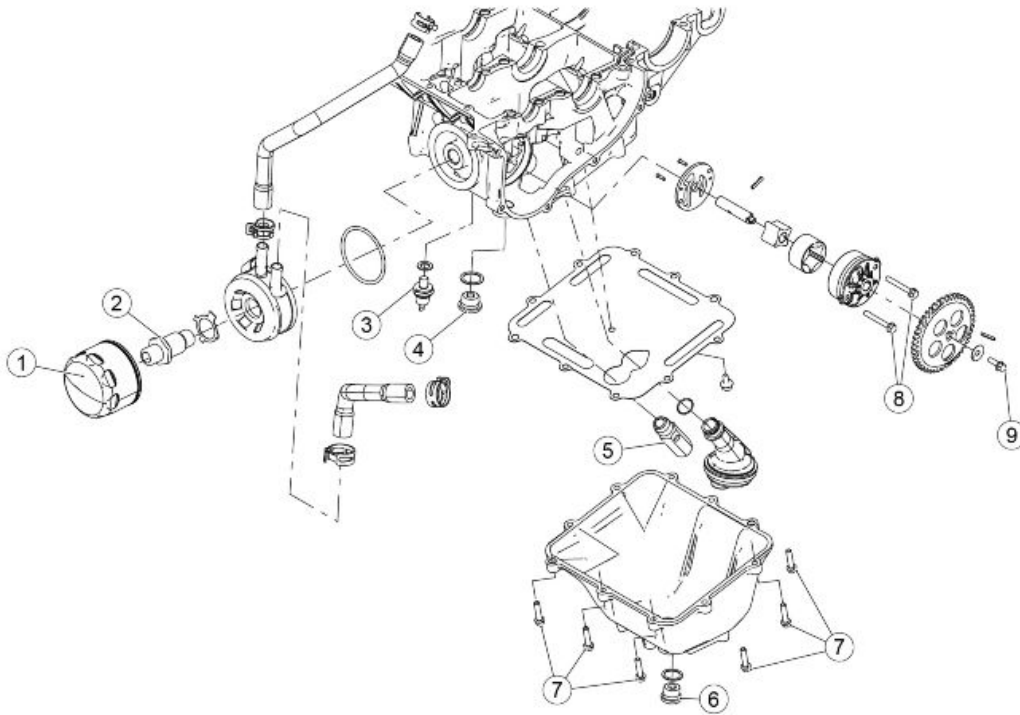
COMPLETE GEAR - SELECTOR - DESMODROMIC

Pos.	Description	Type	Quantity	Torque	Notes
1	Retention plate fixing hex socket screws	-	2	12 Nm (8.85 lbf ft)	Pre-impregnated
2	Gear selector drum fixing flanged hex screw	-	1	25 Nm (18.44 lbf ft)	-
3	Gear sensor fixing round headed screws	-	2	6 Nm (4.43 lbf ft)	-
4	Special screw	-	1	12 Nm (8.85 lbf ft)	-



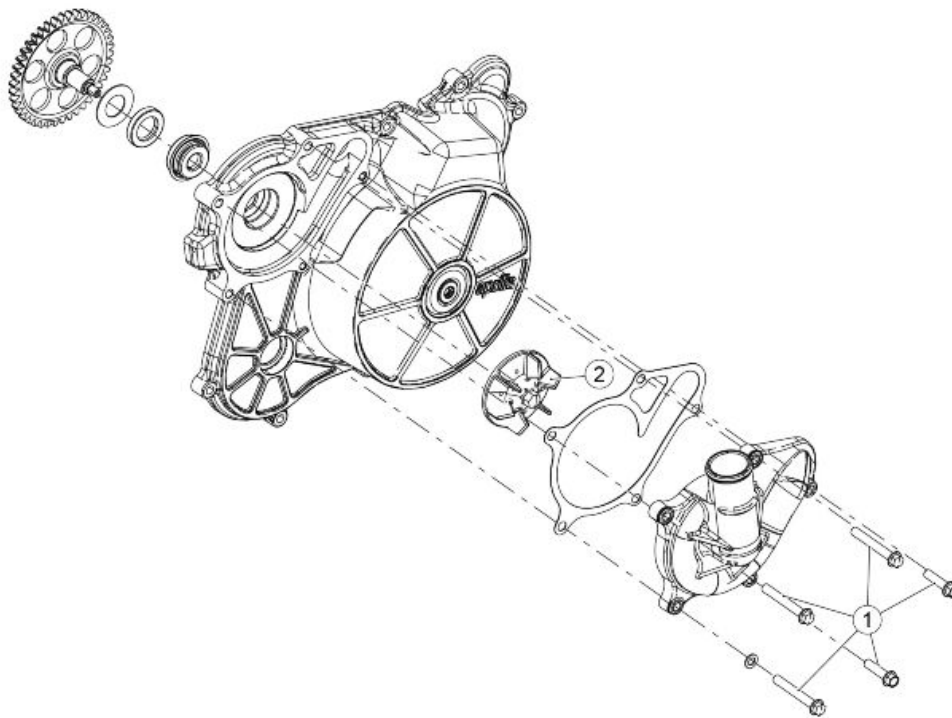
GEARBOX COMPONENTS

Pos.	Description	Type	Quantity	Torque	Notes
1	Flanged, hex. head screw used for fastening the pinion	M10x25	1	50 Nm (36.87 lb ft)	With thread-lockers



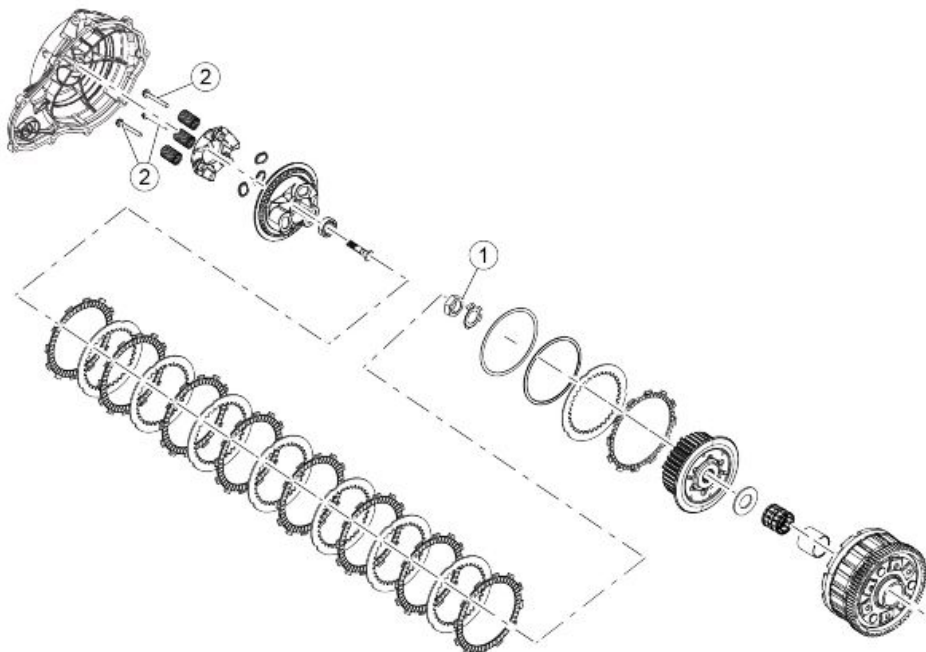
LUBRICATION

Pos.	Description	Type	Quantity	Torque	Notes
1	Oil filter	-	1	15 Nm (11.06 lbf ft)	-
2	Oil filter joint	-	1	28.5 Nm (21.02 lbf ft)	-
3	Oil pressure sensor	-	1	13 Nm (9.59 lbf ft)	-
4	Crankcase cap	-	1	20 Nm (14.75 lbf ft)	-
5	Oil pressure regulation valve	-	1	42 Nm (30.98 lbf ft)	-
6	Drainage plug	-	1	20 Nm (14.75 lbf ft)	-
7	Sump fixing flanged hex screw	M6	10	12 Nm (8.85 lbf ft)	-
8	Oil pump fastening screws	M5	2	6 Nm (4.43 lbf ft)	-
9	Oil pump gear fastener screw	-	1	12 Nm (8.85 lbf ft)	-



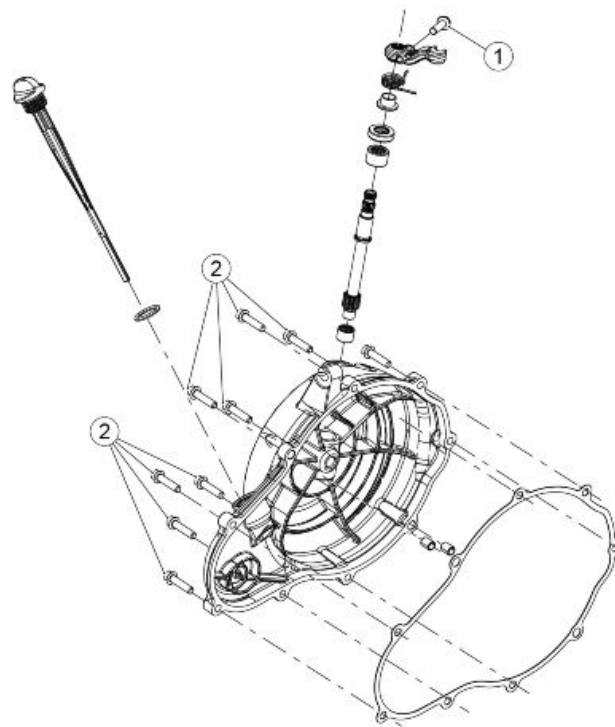
WATER PUMP

Pos.	Description	Type	Quantity	Torque	Notes
1	Water pump cover fixing screws	M6	5	12 Nm (8.85 lbf ft)	-
2	Water pump impeller	-	1	4.5 Nm (3.32 lbf ft)	-



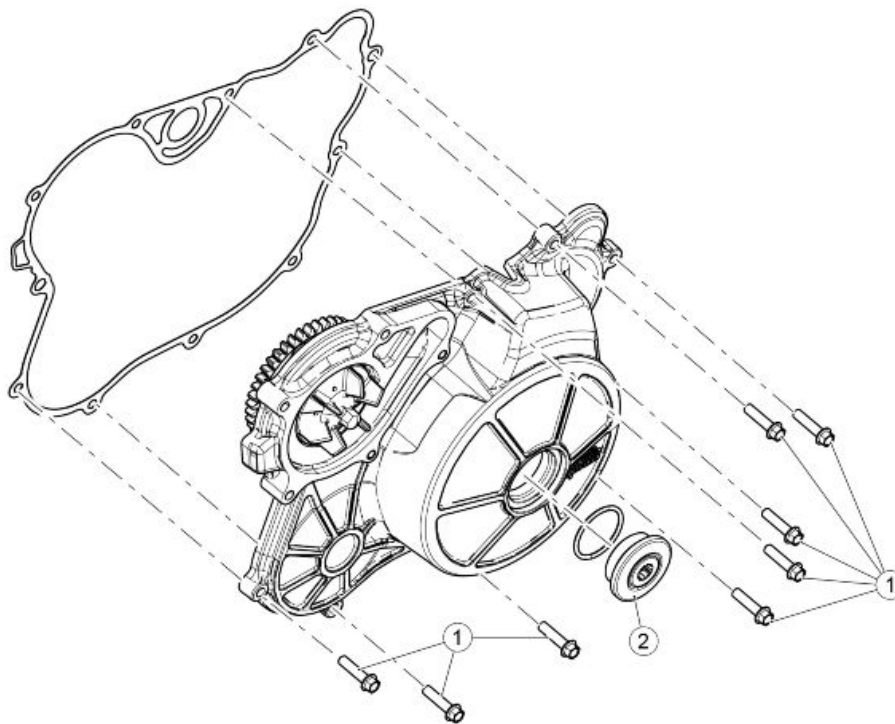
CLUTCH

Pos.	Description	Type	Quantity	Torque	Notes
1	Clutch fastening nut	-	1	175 Nm (129.07 lbf ft)	-
2	Screws for springs	M6	3	10 Nm (7.37 lb ft)	-



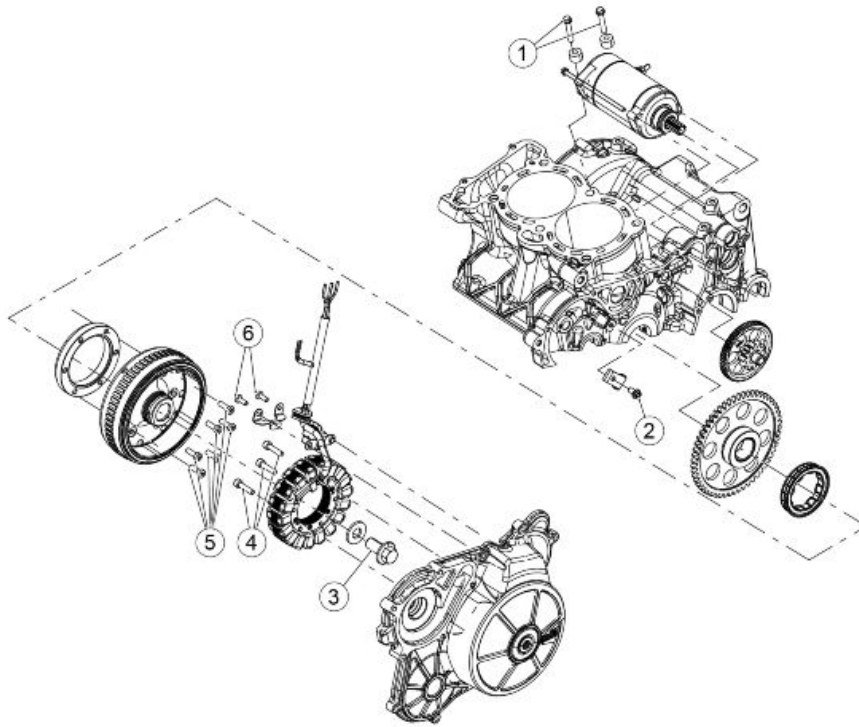
CLUTCH COVER

Pos.	Description	Type	Quantity	Torque	Notes
1	Clutch control lever flanged hex fixing screw	M6x20	1	10 Nm (7.38 lbf ft)	-
2	Clutch cover flanged hex fixing screw	-	8	12 Nm (8.85 lbf ft)	-



FLYWHEEL COVER

Pos.	Description	Type	Quantity	Torque	Notes
1	Flywheel cover flanged hex fixing screw	M6	8	12 Nm (8.85 lbf ft)	-
2	Flywheel cover cap	-	1	20 Nm (14.75 lbf ft)	-



FLYWHEEL - IGNITION

Pos.	Description	Type	Quantity	Torque	Notes
1	Starter motor fastening screws	M6x35	2	12 Nm (8.85 lbf ft)	-
2	Starter ring gear containment plate fastening screw	M6x35	1	12 Nm (8.85 lbf ft)	-
3	Rotor fastening screw	M14x30	1	195 Nm (143,82 lbf ft)	-
4	Stator SHC fixing screws	M6x30	3	10 Nm (7.38 lbf ft)	Pre-impregnated
5	Free wheel on rotor SHC fixing screws	M6x18	3	14 Nm (10.33 lbf ft)	Pre-impregnated
6	Stator wiring harness support plate fixing screws	M5x14	2	3 Nm (2.21 lbf ft)	Pre-impregnated